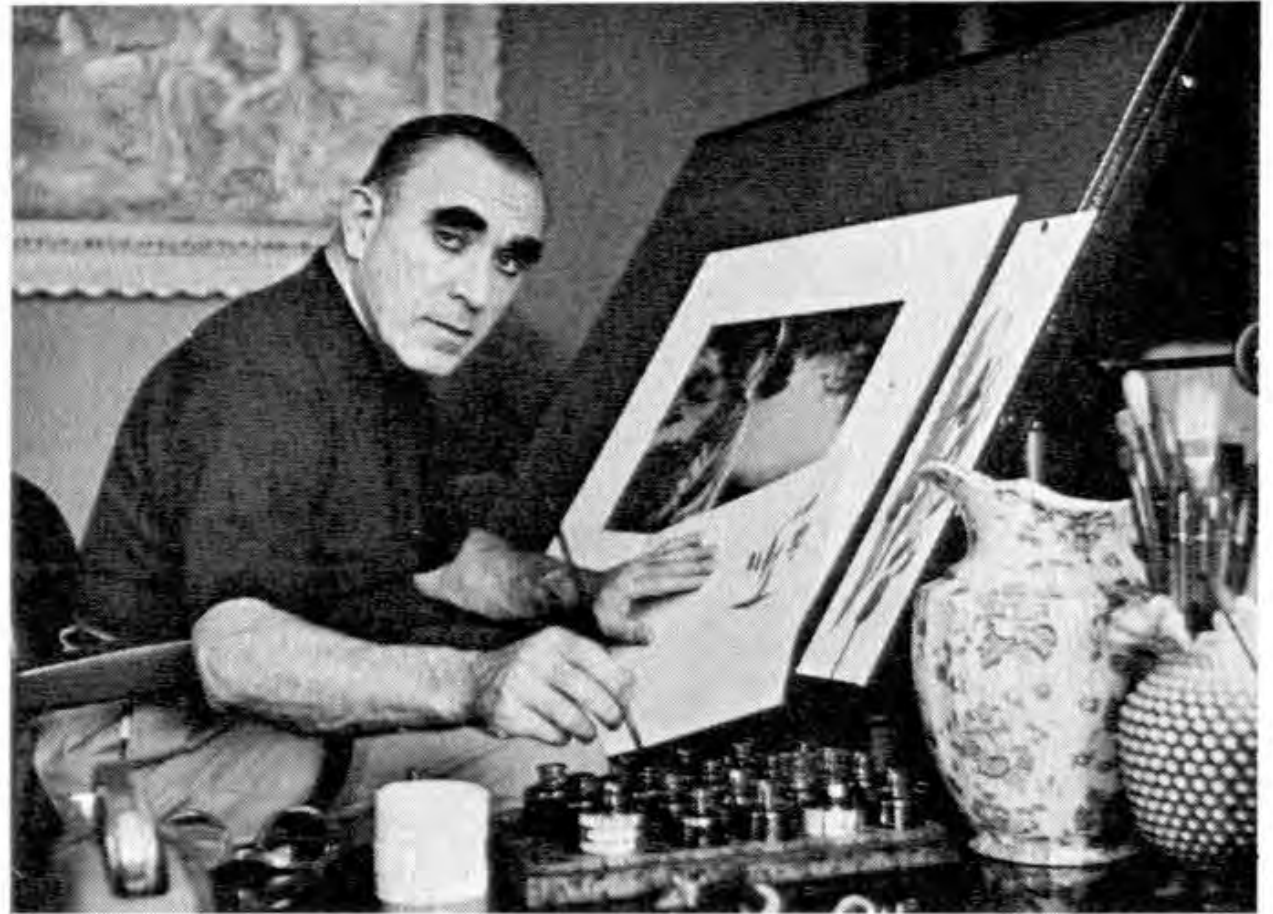


Albert Dorne (1906 - 1965)

Dorne was born in the slums of New York City's East Side, and had a troubled childhood plagued with tuberculosis and heart problems. He would cut classes to study art in the museums, eventually quitting school altogether to support his family. After numerous jobs such as managing a newsstand and acting as an office boy, as well as a short professional boxing career, Dorne began working in advertising.

Dorne was president of the New York Society of Illustrators in 1947–48. In 1948, he conceived the idea of a correspondence school for art, and recruited eleven other well-known artists and illustrators affiliated with the Society of Illustrators, including Norman Rockwell, to found the Famous Artists School. In 1961, he helped found the Famous Photographers School and the Famous Writers School, based on similar principles. All three schools were based in Westport, Connecticut, and by 1963, boasted more than 50,000 students in the U.S. and 54 foreign countries, with a gross income of \$10 million.

- Wikipedia



Albert Dorne



This drawing shows how a knowledge of drapery and choice of the right kind of folds can strengthen a mood. The obvious drop folds in the woman's skirt help her drap. Along the bottom of the chair the slipcover forms obvious pipe folds.

Everybody knows the sign of good coffee





Six Greedy Loafers

